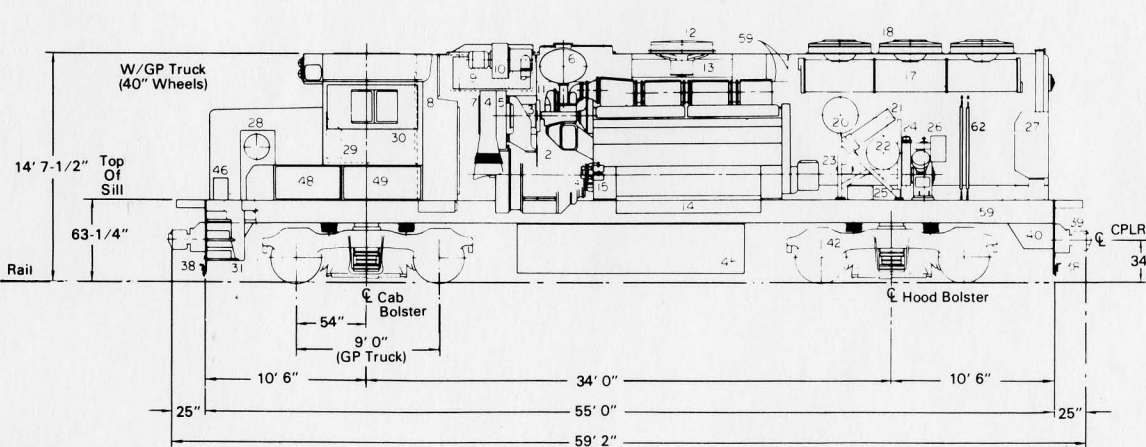
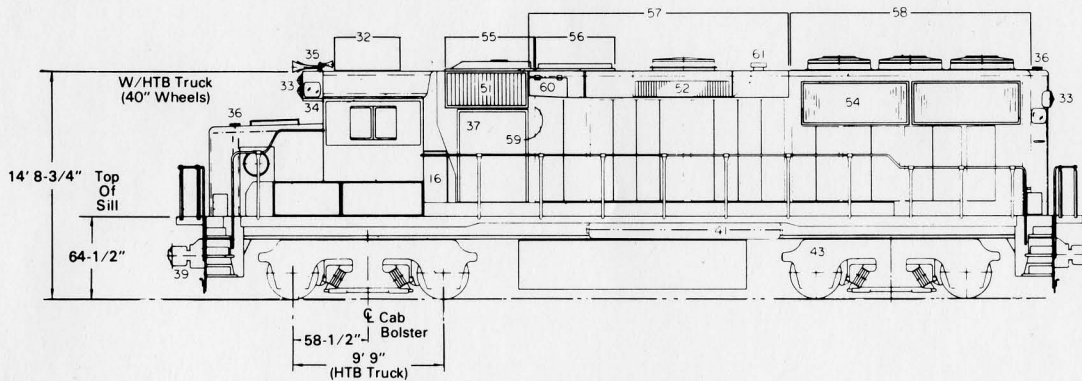
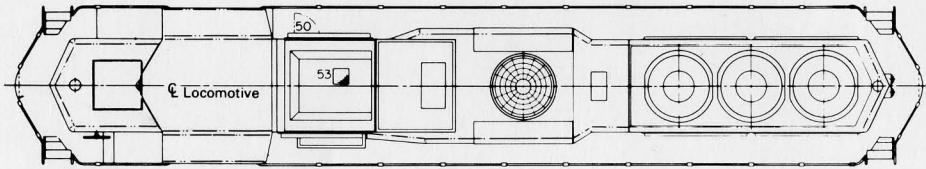
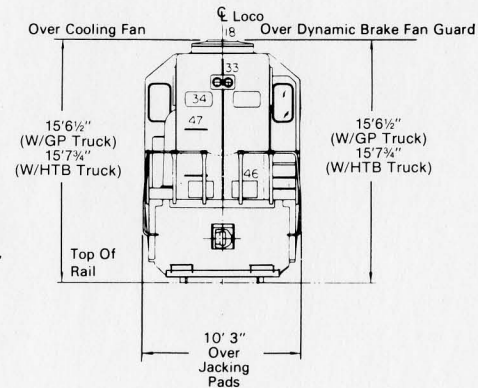


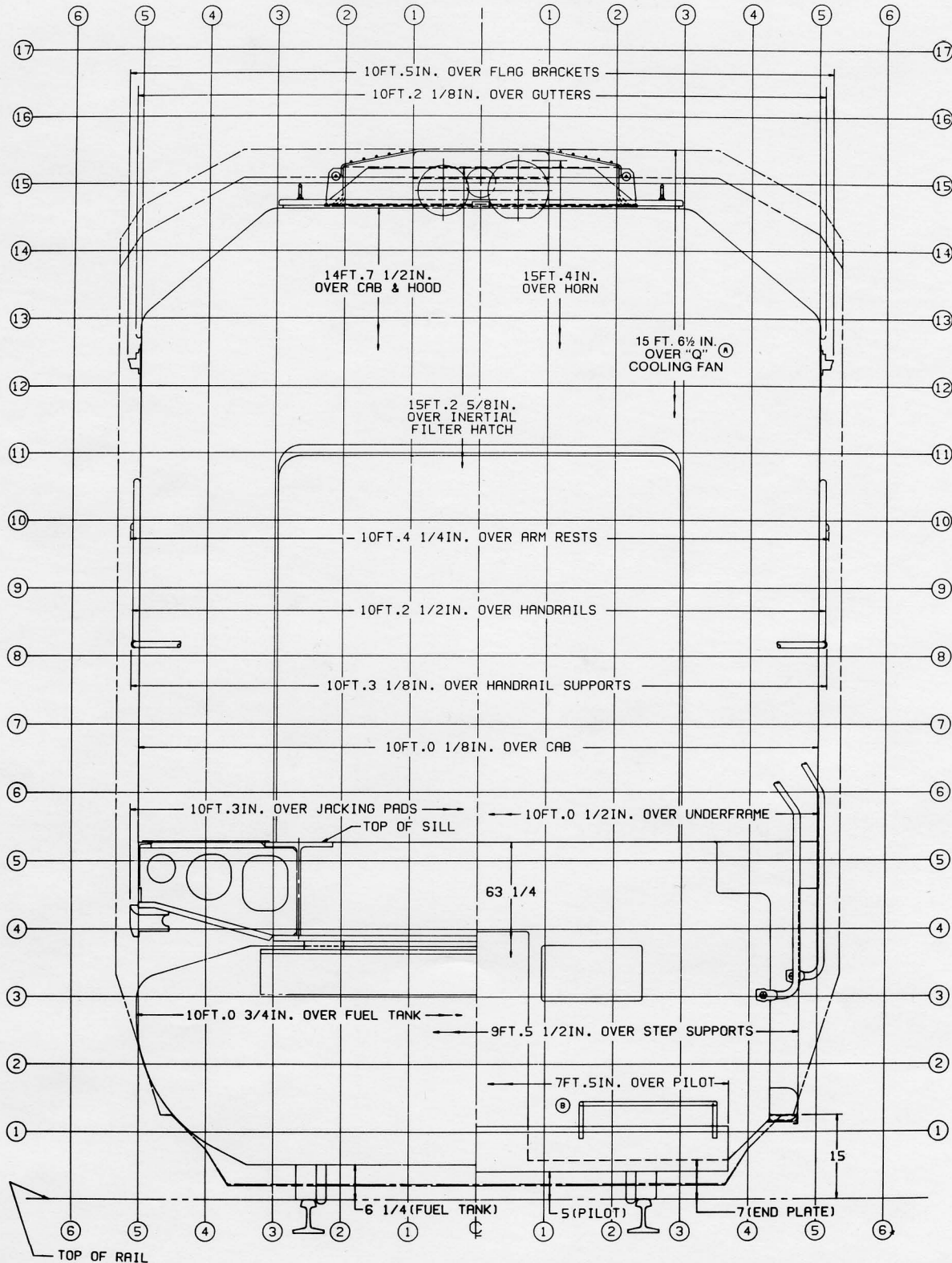
# MODEL GP50 — 3600 HP GENERAL PURPOSE LOCOMOTIVE



- LEGEND**
- |   |   |
|---|---|
| 1. Engine 16-645F3B   | 41. Main Reservoirs                           |
| 2. Generator Alternator (AR15 D18)                                | 42. GP Truck (2 Axle - 40" Diameter Wheels)   |
| 3. Auxiliary Generator (18 KW-AC)                                 | *43. HTB Truck (2 Axle - 40" Diameter Wheels) |
| 4. Traction Motor Blower  | 44. Traction Motors                           |
| 5. Generator/Alternator Blower                                    | 45. Fuel Tank                                 |
| 6. Engine Exhaust Silencer  | 46. Sand Trap Access                          |
| 7. Engine Air Filters   | 47. Ladder for Roof Access                    |
| 8. Electrical Control Cabinet                                     | 48. Battery Access                            |
| 9. Inertial Filters   | 49. Air Brake Equipment Access                |
| 10. Dust Bin Blower   | 50. Inertial Filter Compartment Access Door   |
| 11. Engine Room Partition   | 51. Inertial Filter Air Inlet                 |
| *12. Dynamic Brake Fan  | *52. Dynamic Brake Air Inlet                  |
| *13. Dynamic Brake Grids  | 53. Dust Bin Blower Air Discharge             |
| *14. Increased Capacity Oil Pan                                   | 54. Cooling Fan Inlet Shutters                |
| 15. Starting Motors   | 55. Removable Filter Hatch                    |
| 16. Electrical Control Cabinet Air Filter Box                     | 56. Removable Turbo Hatch                     |
| 17. Cooling Radiators   | *57. Removable Dynamic Brake Hatch            |
| 18. Cooling Fans  | 58. Removable Fan Hatch                       |
| 19. A.C. Cabinet  | 59. Bolted Joint                              |
| 20. Engine Water Tank   | *60. Dynamic Brake Cable Connection Access    |
| 21. Lube Oil Cooler   | 61. Engine Room Vent                          |
| 22. Lube Oil Filter   | 62. Hood Lateral Stabilizers                  |
| 23. Fuel Pump   |   |
| 24. 30 In. Primary Air Filter                                     |   |
| 25. Traction Motor Air Duct                                       |   |
| 26. Air Compressor (WBO)  |   |
| 27. Sandbox   |   |
| 28. Handbrake   |   |
| 29. Electric Cab Heater   |   |
| 30. Clean Cab (Phase II)  |   |
| 31. Side Footboards (4 Corners)                                   |   |
| *32. Provision for Air Conditioning                               |   |
| 33. Headlight   |   |
| 34. Number Boxes  |   |
| 35. Horn  |   |
| 36. Sand Filler   |   |
| 37. Traction Motor - Generator/Alternator Blower Blower Enclosure |   |
| 38. Pilot W/Hose Storage Rack                                     |   |
| 39. Coupler   |   |
| 40. Draft Gear  |   |
- \* Modification
- Note:  
Locomotive Height Tolerance =  $\pm 1-1/2$  In.  
Locomotive Width Tolerance =  $\pm 1/2$  In.  
Truck Lateral at Bolsters =  $\pm 1-3/4$  In. Nom.  
Locomotive is shown including half variable supplies and in new condition standing still on level and tangent track.



# GP50 CLEARANCE DIAGRAM



**Note:**

Locomotive Height Tolerance =  $\pm 1\frac{1}{2}$

Locomotive Width Tolerance =  $\pm \frac{1}{2}$

Lateral (Bol. + Jrls. with New Trucks) =  $2\frac{1}{4}$  (nom.)

Locomotive is shown including half variable supplies and in new condition. Standing still on level and tangent track. Vertical dimensions will be  $\frac{1}{2}$  in. less with full wheel wear. Vertical dimensions can also vary  $\pm \frac{1}{2}$  due to variable supplies.

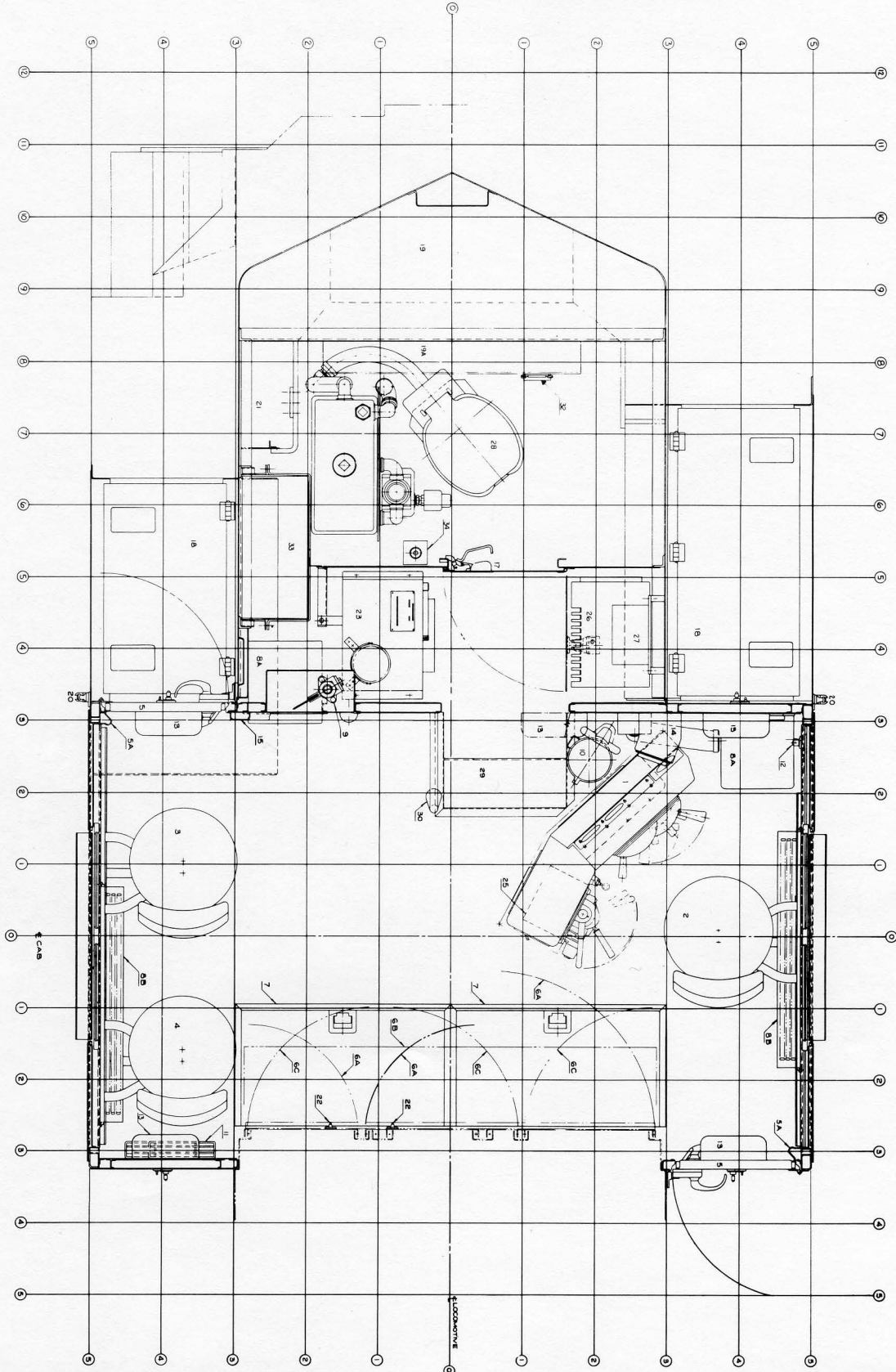
**Clearance Outline:**

A.A.R. Plate "B" Dated March 1, 1972

A.A.R. Plate "C" Dated March 1, 1968



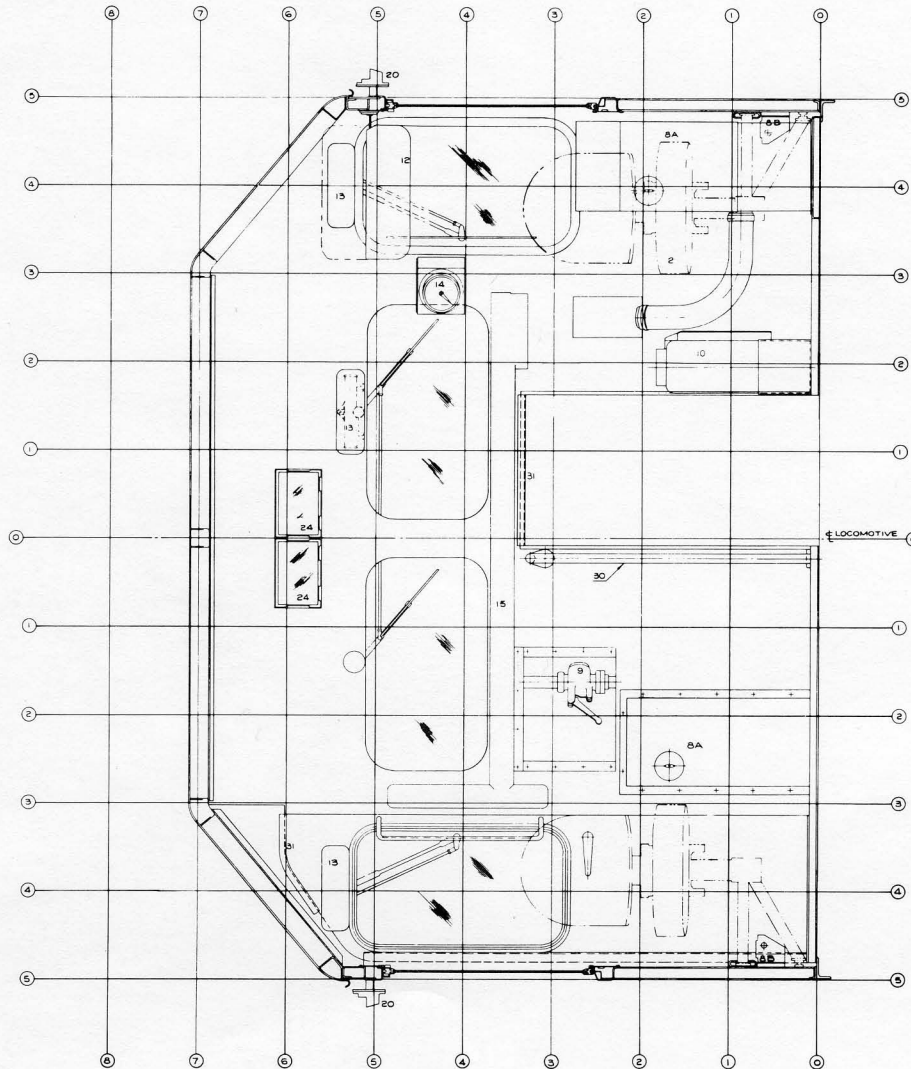
# CAB AND SHORT HOOD ARRANGEMENT



- |   |                                  |                               |                             |
|---|----------------------------------|-------------------------------|-----------------------------|
| 1. Engineer's Control Stand - AAR                 | 7. Trap Doors (2)                | 16. Door Stop                 | *26. Transmitter & Receiver |
| 2. Engineer's Seat with Seat Locking Modification | 8. Cab Heaters - Electric (4)    | 17. Short Hood Door           | *27. Radio Voltage Filter   |
| *3. Auxiliary Seat                                | 8A. Front Partition (2)          | 18. Battery Box               | *28. Toilet                 |
| 4. Observer's Seat                                | 8B. Side Strip Heater (2)        | 19. Sand Box                  | 29. Step Down to Short Hood |
| 5. Cab Door (2)                                   | 9. Emergency Brake Valve & Guard | *19A. Extra Capacity Sand Box | 30. Grab Iron               |
| 5A. Door Hinge Boot (2)                           | *10. Fire Extinguisher - 30 Lb.  | 20. Lamp Bracket (2)          | 31. Headbump Pad            |
| 6. Electrical Cabinet                             | 11. Flag & Fusee Rack            | 21. Hand Brake Recess         | *32. Toilet Paper Holder    |
| 6A. Upper Doors                                   | 12. Sun Visor                    | 22. Coat Hook (2)             | *33. Water Tank             |
| 6B. Middle Door                                   | 13. Window Wiper & Guard (6)     | *23. Water Cooler             | 34. Floor Drain             |
| 6C. Lower Doors                                   | 14. Speed Recorder               | 24. Card Holder               |                             |
|   | 15. Defroster Duct               | *25. Radio                    |                             |



# CAB ARRANGEMENT — FORWARD CAB WALL



- |   |   |  |   |
|---|---|--|---|
| <ul style="list-style-type: none"> <li>1. Engineer's Control Stand - AAR</li> <li>2. Engineer's Seat with Seat Locking Modification</li> <li>* 3. Auxiliary Seat</li> <li>4. Observer's Seat</li> <li>5. Cab Door (2)</li> <li>5A. Door Hinge Boot (2)</li> <li>6. Electrical Cabinet</li> <li>6A. Upper Doors</li> <li>6B. Middle Door</li> <li>6C. Lower Doors</li> </ul> | <ul style="list-style-type: none"> <li>7. Trap Doors (2)</li> <li>8. Cab Heaters - Electric (4)</li> <li>8A. Front Partition (2)</li> <li>8B. Side Strip Heater (2)</li> <li>9. Emergency Brake Valve &amp; Guard</li> <li>*10. Fire Extinguisher - 30 Lb.</li> <li>11. Flag &amp; Fusee Rack</li> <li>12. Sun Visor</li> <li>13. Window Wiper &amp; Guard (6)</li> <li>14. Speed Recorder</li> <li>15. Defroster Duct</li> </ul> | <ul style="list-style-type: none"> <li>16. Door Stop</li> <li>17. Short Hood Door</li> <li>18. Battery Box</li> <li>19. Sand Box</li> <li>*19A. Extra Capacity Sand Box</li> <li>20. Lamp Bracket (2)</li> <li>21. Hand Brake Recess</li> <li>22. Coat Hook (2)</li> <li>*23. Water Cooler</li> <li>24. Card Holder</li> <li>*25. Radio</li> </ul> | <ul style="list-style-type: none"> <li>*26. Transmitter &amp; Receiver</li> <li>*27. Radio Voltage Filter</li> <li>*28. Toilet</li> <li>29. Step Down to Short Hood</li> <li>30. Grab Iron</li> <li>31. Headbump Pad</li> <li>*32. Toilet Paper Holder</li> <li>*33. Water Tank</li> <li>34. Floor Drain</li> </ul> |
|---|---|--|---|

