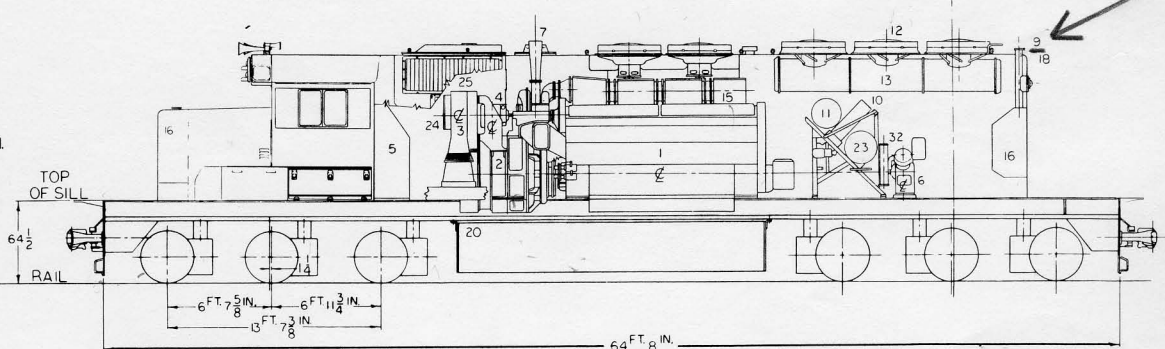
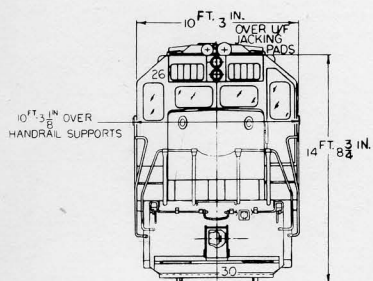
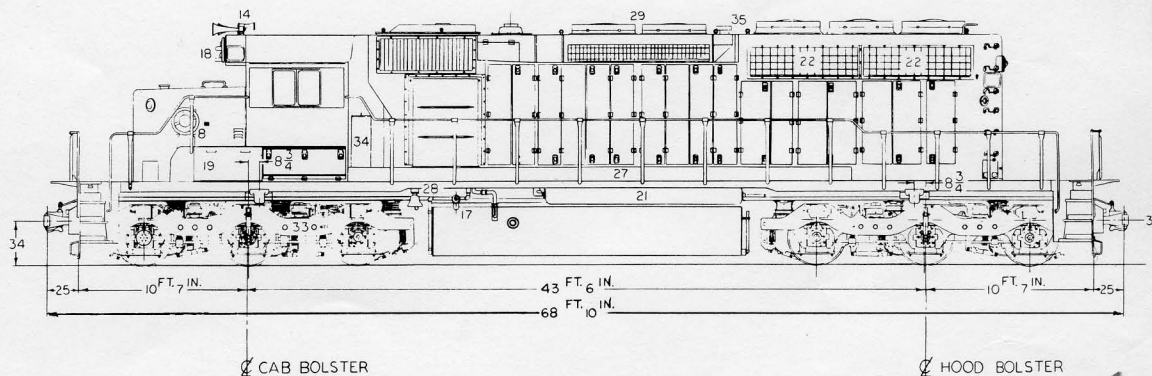
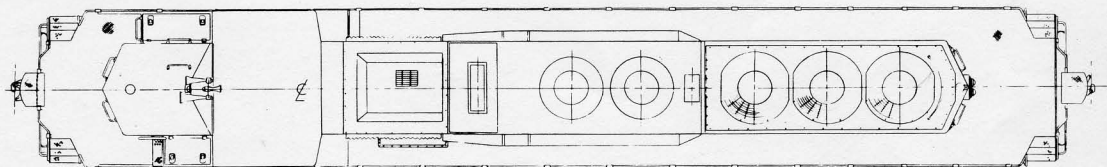


MODEL SD40-2 – 3000 HP SIX MOTOR DIESEL ELECTRIC LOCOMOTIVE

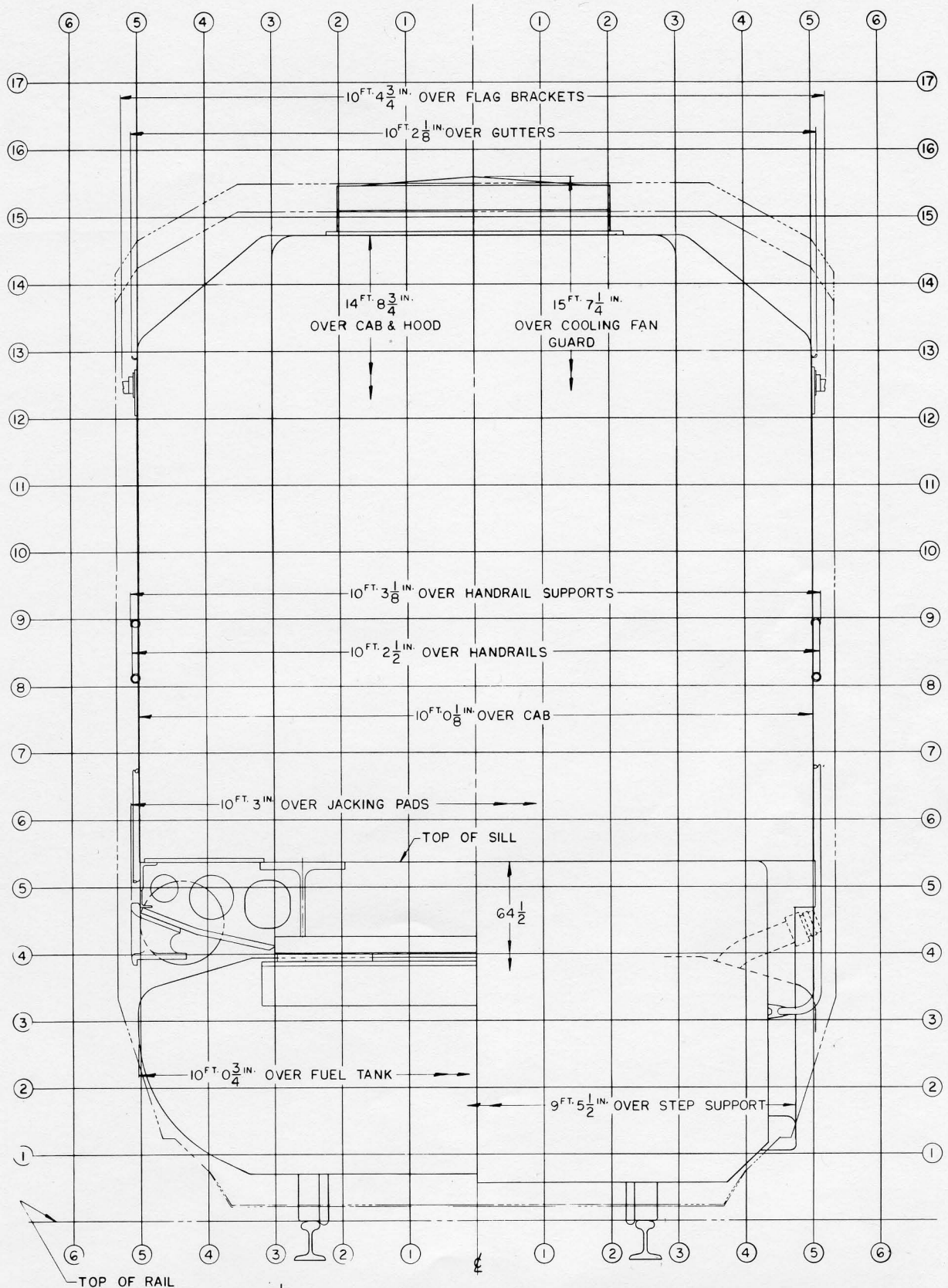
- | | |
|------------------------------------|-----------------------------------|
| 1. ENGINE 16-645E3 | 19. BATTERIES |
| 2. GENERATOR-ALTERNATOR AR10A7-D14 | *20. FUEL TANK (4000 GAL. SHOWN) |
| 3. TRACTION MOTOR-GENERATOR BLOWER | 21. MAIN AIR RESERVOIRS |
| 4. AUXILIARY GENERATOR | 22. COOLING AIR INLET SHUTTERS |
| 5. ELECTRICAL CONTROL CABINET | 23. LUBE OIL FILTER |
| *6. AIR COMPRESSOR (WBG SHOWN) | 24. ENGINE AIR FILTER |
| 7. ENGINE EXHAUST STACK | 25. INERTIAL AIR SEPARATOR |
| 8. HANDBRAKE | 26. NUMBER BOX |
| 9. SAND BOX FILLER | 27. TRACTION MOTOR AIR DUCT |
| 10. LUBE OIL COOLER | 28. BELL |
| 11. ENGINE WATER TANK | *29. DYNAMIC BRAKE FAN |
| 12. 48 INCH COOLING FAN | 30. PILOT |
| 13. RADIATOR | 31. COUPLER |
| 14. HORN | 32. FUEL FILTER |
| 15. EXHAUST MANIFOLD | 33. TRUCK-HTC-6 WHEEL |
| 16. SAND BOX | 34. ELECTRICAL CABINET AIR FILTER |
| *17. FUEL FILLER | 35. ENGINE ROOM VENT |
| 18. HEADLIGHT | *MODIFICATION |

NOTE:
 LOCOMOTIVE HEIGHT TOLERANCE = +2½ IN.
 -1½ IN.
 LOCOMOTIVE WIDTH TOLERANCE = ±1/2 IN.
 TRUCK LATERAL AT BOLSTERS = 1½ IN. NOM.

Locomotive is shown including half variable supplies and in new condition standing still on level and tangent track.



SD40-2 CLEARANCE DIAGRAM

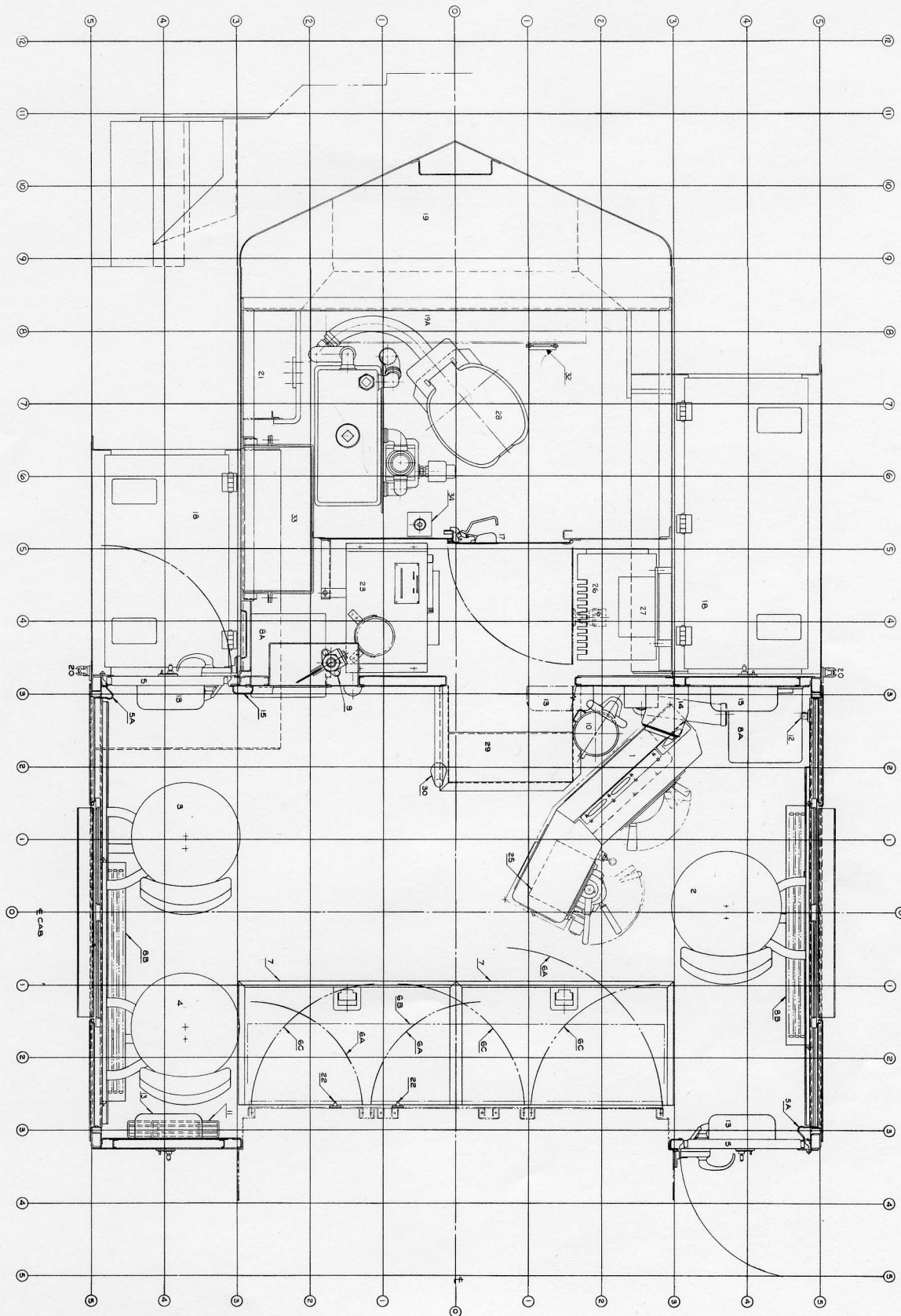


NOTE:
 LOCO. HEIGHT TOLERANCE = $+2\frac{1}{2}$
 LOCO. WIDTH TOLERANCE = $\pm\frac{1}{2}$
 TRUCK LATERAL AT BOLSTERS = $\frac{1}{4}$ NOM.

LOCOMOTIVE IS SHOWN INCLUDING HALF VARIABLE SUPPLIES AND IN NEW CONDITION, STANDING STILL ON LEVEL AND TANGENT TRACK.
 VERTICAL DIMENSIONS WILL BE $\frac{1}{2}$ IN. LESS WITH FULL WHEEL WEAR.
 VERTICAL DIMENSIONS CAN ALSO VARY $\pm\frac{1}{8}$ DUE TO VARIABLE SUPPLIES.

CLEARANCE OUTLINE:
 A.A.R. PLATE "B" DATED MARCH 1, 1968. -----
 A.A.R. PLATE "C" DATED MARCH 1, 1968. -----

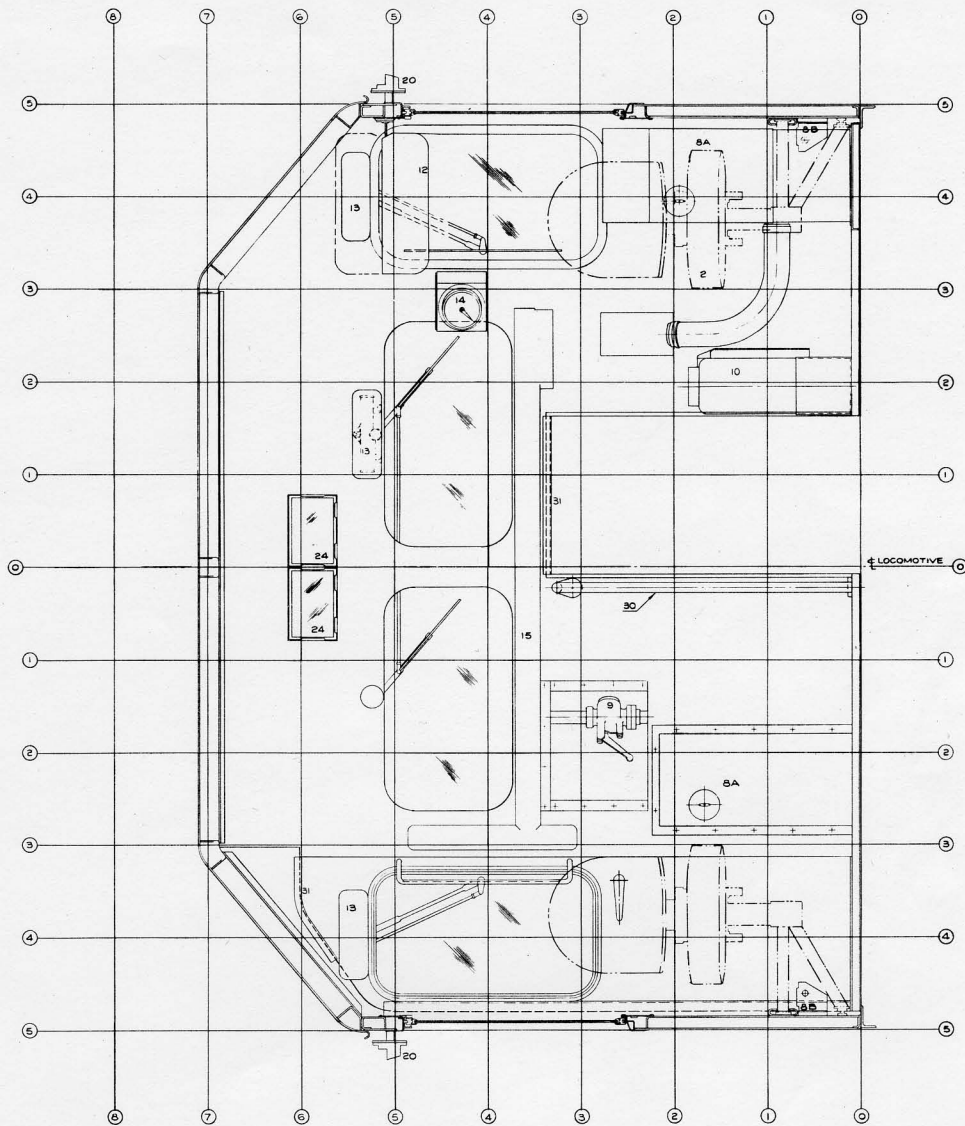
CAB AND SHORT HOOD ARRANGEMENT



- | | | | |
|--|---|--|--|
| <ul style="list-style-type: none"> 1. Engineer's Control Stand-AAR 2. Engineer's Seat with Seat Locking Modification *3. Auxiliary Seat 4. Observer's Seat 5. Cab Door (2) 5a. Door Hinge Boot (2) 6. Electrical Cabinet 6a. Upper Doors 6b. Middle Door 6c. Lower Doors | <ul style="list-style-type: none"> 7. Trap Doors (2) *8. Cab Heaters-Electric (4) 8a. Front Partition (2) *8b. Side Strip Heater (2) 9. Emergency Brake Valve and Guard *10. Fire Extinguisher-30 lb. 11. Flag & Fusee Rack 12. Sun Visor 13. Window Wiper & Guard (6) 14. Speed Recorder | <ul style="list-style-type: none"> 15. Defroster Duct 16. Door Stop 17. Short Hood Door 18. Battery Box 19. Sand Box *19a. Extra Capacity Sand Box 20. Lamp Bracket (2) 21. Hand Brake Recess 22. Coat Hook (2) *23. Water Cooler 24. Card Holder | <ul style="list-style-type: none"> *25. Radio *26. Transmitter & Receiver *27. Radio Voltage Filter *28. Toilet 29. Step Down to Short Hood 30. Grab Iron 31. Headbump Pad *32. Toilet Paper Holder *33. Water Tank 34. Floor Drain *Modification |
|--|---|--|--|



CAB ARRANGEMENT – FORWARD CAB WALL



- 1. Engineer's Control Stand-AAR
- 2. Engineer's Seat with Seat Locking Modification
- *3. Auxiliary Seat
- 4. Observer's Seat
- 5. Cab Door (2)
- 5a. Door Hinge Boot (2)
- 6. Electrical Cabinet
- 6a. Upper Doors
- 6b. Middle Door
- 6c. Lower Doors

- 7. Trap Doors (2)
- *8. Cab Heaters-Electric (4)
- 8a. Front Partition (2)
- *8b. Side Strip Heater (2)
- 9. Emergency Brake Valve and Guard
- *10. Fire Extinguisher-30 lb.
- 11. Flag & Fusee Rack
- 12. Sun Visor
- 13. Window Wiper & Guard (6)
- 14. Speed Recorder

- 15. Defroster Duct
- 16. Door Stop
- 17. Short Hood Door
- 18. Battery Box
- 19. Sand Box
- *19a. Extra Capacity Sand Box
- 20. Lamp Bracket (2)
- 21. Hand Brake Recess
- 22. Coat Hook (2)
- *23. Water Cooler
- 24. Card Holder

- *25. Radio
- *26. Transmitter & Receiver
- *27. Radio Voltage Filter
- *28. Toilet
- 29. Step Down to Short Hood
- 30. Grab Iron
- 31. Headbump Pad
- *32. Toilet Paper Holder
- *33. Water Tank
- 34. Floor Drain
- *Modification

