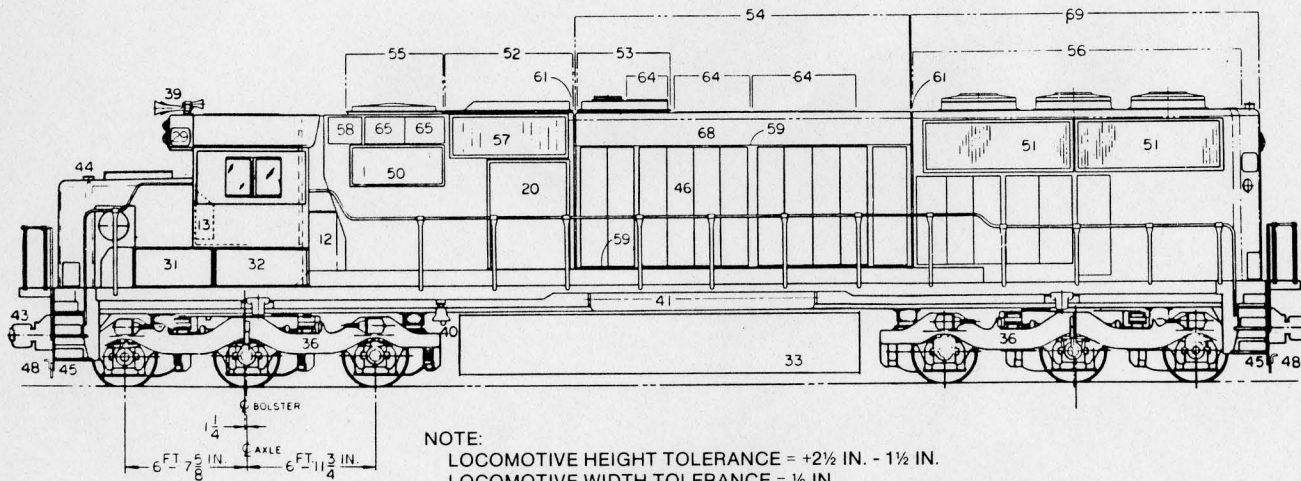
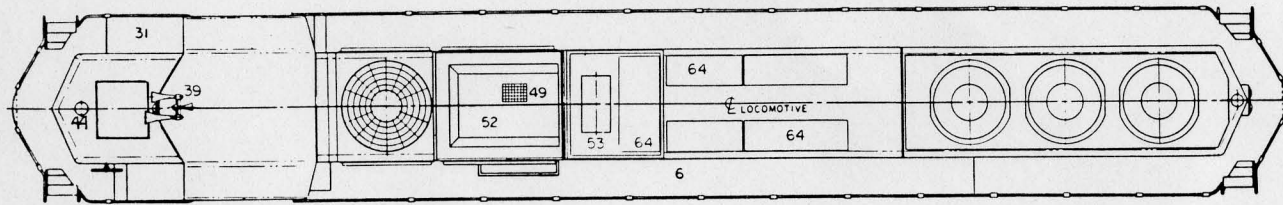


MODEL SD50 - 3600 HP SIX MOTOR DIESEL-ELECTRIC LOCOMOTIVE

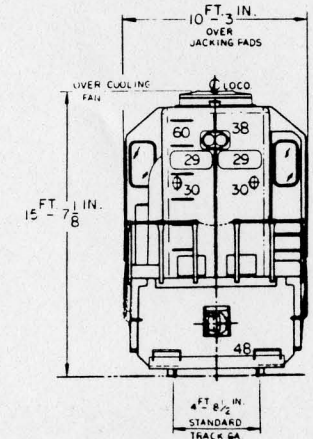
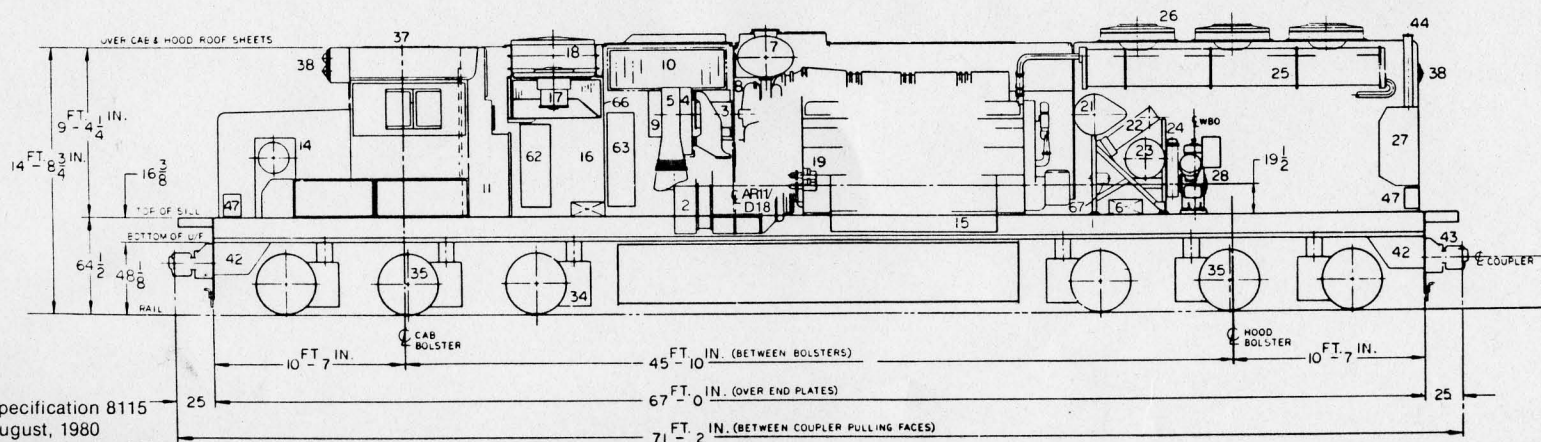


NOTE:
 LOCOMOTIVE HEIGHT TOLERANCE = +2½ IN. - 1½ IN.
 LOCOMOTIVE WIDTH TOLERANCE = ½ IN.
 TRUCK LATERAL (BOLSTERS + JOURNALS W/NEW TRUCKS) = ±2¼ IN. (NOM)
 LOCOMOTIVE IS SHOWN INCLUDING HALF VARIABLE SUPPLIES AND IN NEW
 CONDITION STANDING STILL ON LEVEL AND TANGENT TRACK.

LEGEND

1. ENGINE 16-645F3B (3800/3600 HP @ 950 RPM)
2. GENERATOR/ALTERNATOR (AR11/D18)
3. AUXILIARY GENERATOR (18KW-AC)
4. GENERATOR/ALTERNATOR BLOWER
5. TRACTION MOTOR BLOWER
6. TRACTION MOTOR BLOWER AIR DUCT
7. ENGINE EXHAUST SILENCER
8. ENGINE ROOM PARTITION
9. ENGINE AIR FILTERS (45 IN. PAPER - 12 TOTAL)
10. INERTIAL FILTERS (2-14 CELL UNITS - LIFT-OUT TYPE)
11. ELECTRICAL CONTROL CABINET
12. ELECTRICAL CONTROL CABINET AIR FILTER
13. CAB HEATER (ELECTRIC)
14. HANDBRAKE (WHEEL TYPE)
- *15. INCREASED CAPACITY OIL PAN
16. LOCOTROL COMPARTMENT
- *17. DYNAMIC BRAKE FAN (54 IN. DIA.)
- *18. DYNAMIC BRAKE GRIDS
19. STARTING MOTORS (SERIES)
20. TRACTION MOTOR BLOWER BUMP
21. ENGINE WATER TANK
22. LUBE OIL COOLER (6 IN.)
23. LUBE OIL FILTER (7 ELEMENT)
24. 30 IN. PRIMARY FUEL FILTER
25. RADIATORS (6 IN. / 6 ROW - 3½ CORES/BANK - 7 TOTAL)
26. COOLING FANS (48 IN. - "Q" TYPE - 3 TOTAL)
27. SANDBOX (28 CU. FT. - EACH END)
28. AIR COMPRESSOR (WBO SHOWN)
29. NUMBER BOXES (OUTSIDE ACCESS)
30. CLASS LIGHTS
31. BATTERY BOX
32. AIR BRAKE EQUIPMENT
- *33. FUEL TANK (4400 GA. SHOWN - MAXIMUM)
34. TRACTION MOTORS (D87 - 6 TOTAL)
35. WHEELS (40 IN. SHOWN)
36. TRUCK (3 MOTOR/3 AXLE - HTC TYPE)
- *37. PROVISION FOR AIR CONDITIONING
38. HEADLIGHT
39. HORN
40. BELL
41. MAIN AIR RESERVOIRS
42. DRAFT GEAR (NC391)
43. COUPLER (E-TYPE)
44. SAND FILLER
45. SIDE FOOTBOARDS
46. ENGINE ACCESS DOORS
47. SAND TRAP ACCESS
48. PILOT W/HOSE STORAGE RACK
49. DUST BIN BLOWER DISCHARGE
- *50. DYNAMIC BRAKE AIR INLET
51. COOLING AIR INLET W/SHUTTERS
52. REMOVABLE FILTER & GENERATOR HATCH
53. REMOVABLE SILENCER & TURBO HATCH
54. REMOVABLE HOOD CENTER SECTION
- *55. REMOVABLE DYNAMIC BRAKE HATCH
56. REMOVABLE FAN HATCH
57. INERTIAL FILTER AIR INLET
- *58. ACCESS TO "D" CONTACTORS (BOTH SIDES)
59. BOLTED JOINT
60. ROOF ACCESS
61. SLIP JOINT (FULL LENGTH)
62. ACCESS TO LOCOTROL COMPARTMENT
63. FILTERED AIR COMPARTMENT ACCESS
64. CYLINDER LINER REMOVAL DOORS (HINGED)
- *65. DYNAMIC BRAKE ACCESS
66. LOCOTROL COMPARTMENT PARTITION
67. FUEL PUMP
68. REMOVABLE CENTER HATCH (ENGINE MANIFOLD ACCESS)
69. PERMANENT HOOD SECTION

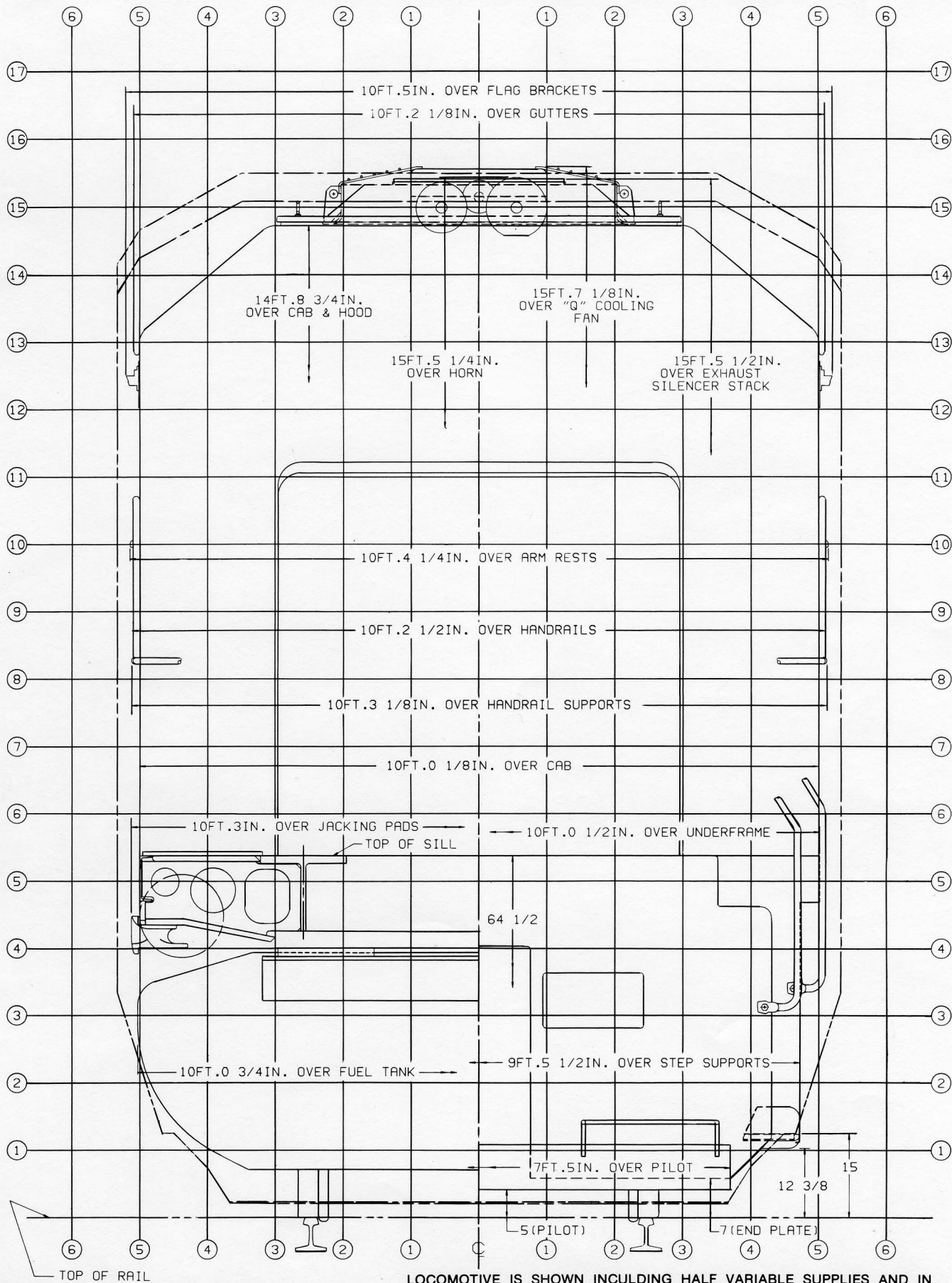
* Modification



Specification 8115
 August, 1980
 Revised April, 1984
 Effective October, 1984



SD50 CLEARANCE DIAGRAM



NOTE:
 LOCOMOTIVE HEIGHT TOLERANCE = $+2\frac{1}{2} - 1\frac{1}{2}$
 LOCOMOTIVE WIDTH TOLERANCE = $\pm\frac{1}{2}$
 LATERAL (BOL. + JRLS. WITH NEW TRUCKS) = $\pm 2\frac{1}{4}$

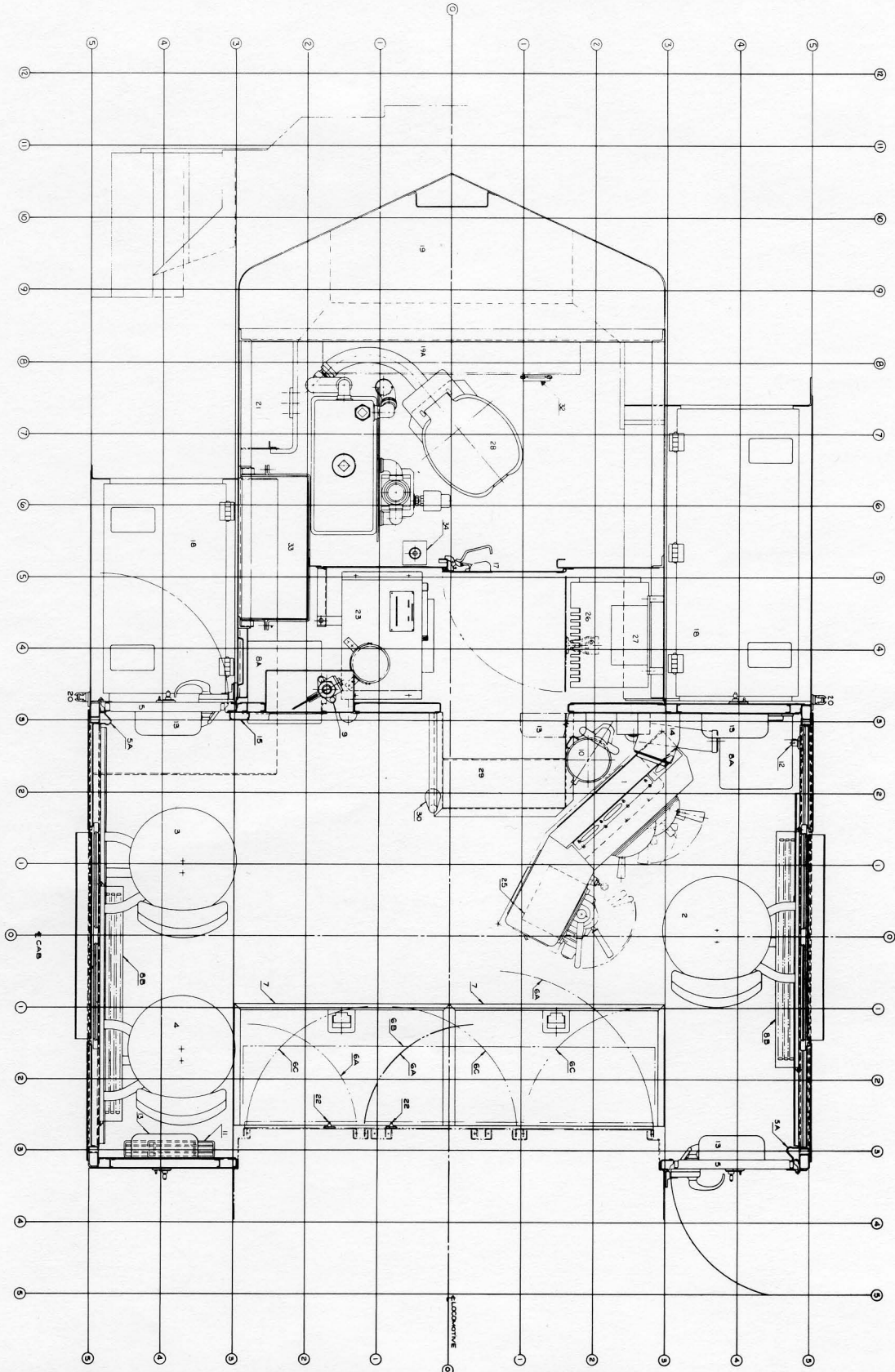
CLEARANCE OUTLINE:
 A.A.R. PLATE "B" DATED MARCH 1, 1972
 A.A.R. PLATE "C" DATED MARCH 1, 1968

Specification 8115
 August 1980

LOCOMOTIVE IS SHOWN INCLUDING HALF VARIABLE SUPPLIES AND IN NEW CONDITION. STANDING STILL ON LEVEL AND TANGENT TRACK. VERTICAL DIMENSIONS WILL BE $\frac{1}{2}$ IN. LESS WITH FULL WHEEL WEAR. VERTICAL DIMENSIONS CAN ALSO VARY $\pm\frac{1}{4}$ DUE TO VARIABLE SUPPLIES.



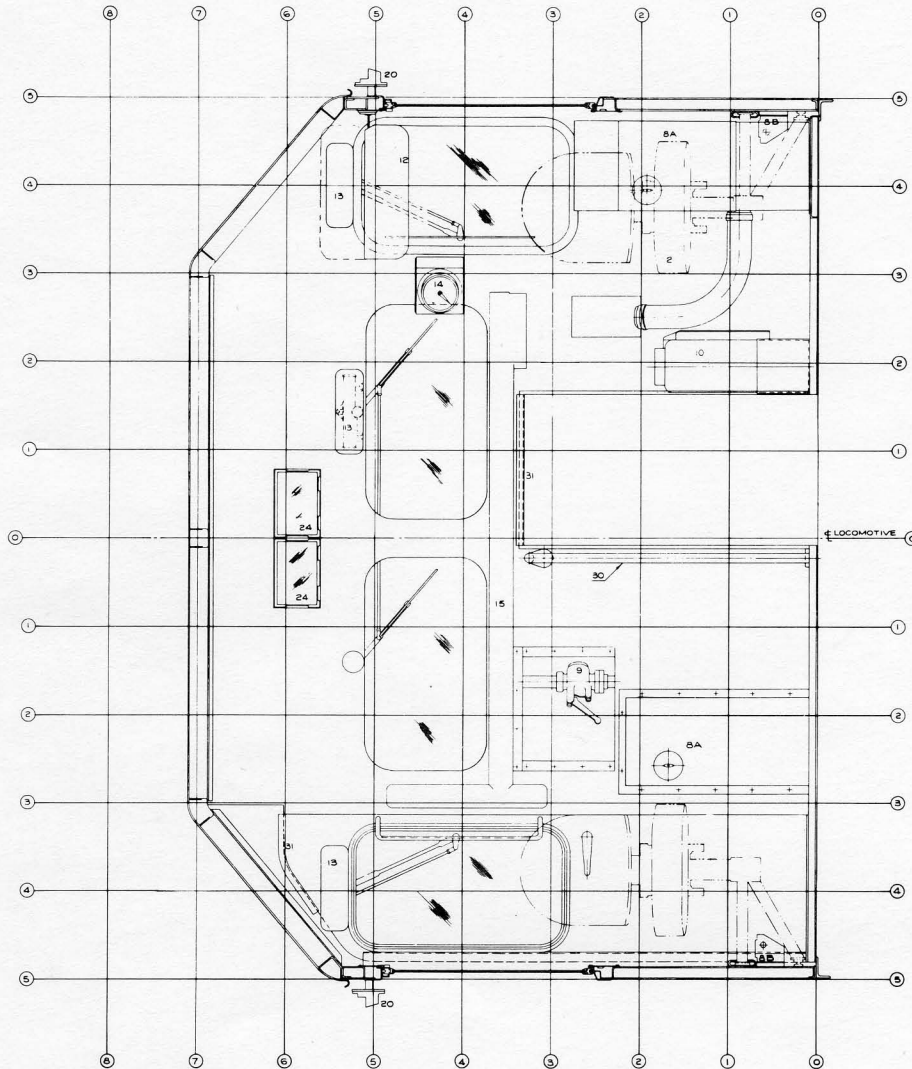
CAB AND SHORT HOOD ARRANGEMENT



- | | | | |
|---|----------------------------------|-------------------------------|-----------------------------|
| 1. Engineer's Control Stand - AAR | 7. Trap Doors (2) | 16. Door Stop | *26. Transmitter & Receiver |
| 2. Engineer's Seat with Seat Locking Modification | 8. Cab Heaters - Electric (4) | 17. Short Hood Door | *27. Radio Voltage Filter |
| *3. Auxiliary Seat | 8A. Front Partition (2) | 18. Battery Box | *28. Toilet |
| 4. Observer's Seat | 8B. Side Strip Heater (2) | 19. Sand Box | 29. Step Down to Short Hood |
| 5. Cab Door (2) | 9. Emergency Brake Valve & Guard | *19A. Extra Capacity Sand Box | 30. Grab Iron |
| 5A. Door Hinge Boot (2) | *10. Fire Extinguisher - 30 Lb. | 20. Lamp Bracket (2) | 31. Headbump Pad |
| 6. Electrical Cabinet | 11. Flag & Fusee Rack | 21. Hand Brake Recess | *32. Toilet Paper Holder |
| 6A. Upper Doors | 12. Sun Visor | *22. Coat Hook (2) | *33. Water Tank |
| 6B. Middle Door | 13. Window Wiper & Guard (6) | *23. Water Cooler | 34. Floor Drain |
| 6C. Lower Doors | 14. Speed Recorder | 24. Card Holder | |
| | 15. Defroster Duct | *25. Radio | |



CAB ARRANGEMENT — FORWARD CAB WALL



- | | | | |
|---|----------------------------------|-------------------------------|-----------------------------|
| 1. Engineer's Control Stand - AAR | 7. Trap Doors (2) | 16. Door Stop | *26. Transmitter & Receiver |
| 2. Engineer's Seat with Seat Locking Modification | 8. Cab Heaters - Electric (4) | 17. Short Hood Door | *27. Radio Voltage Filter |
| * 3. Auxiliary Seat | 8A. Front Partition (2) | 18. Battery Box | *28. Toilet |
| 4. Observer's Seat | 8B. Side Strip Heater (2) | 19. Sand Box | 29. Step Down to Short Hood |
| 5. Cab Door (2) | 9. Emergency Brake Valve & Guard | *19A. Extra Capacity Sand Box | 30. Grab Iron |
| 5A. Door Hinge Boot (2) | *10. Fire Extinguisher - 30 Lb. | 20. Lamp Bracket (2) | 31. Headbump Pad |
| 6. Electrical Cabinet | 11. Flag & Fuse Rack | 21. Hand Brake Recess | *32. Toilet Paper Holder |
| 6A. Upper Doors | 12. Sun Visor | 22. Coat Hook (2) | *33. Water Tank |
| 6B. Middle Door | 13. Window Wiper & Guard (6) | *23. Water Cooler | 34. Floor Drain |
| 6C. Lower Doors | 14. Speed Recorder | 24. Card Holder | |
| | 15. Defroster Duct | *25. Radio | |

