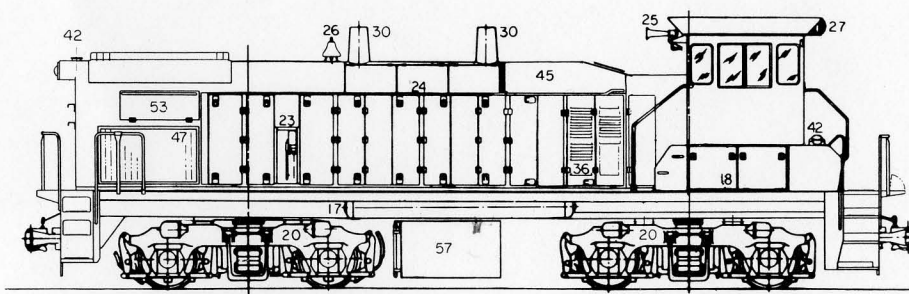
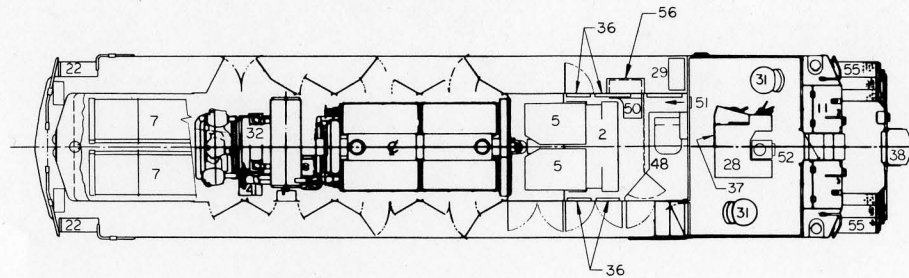


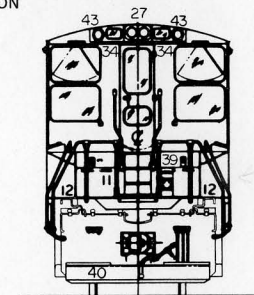
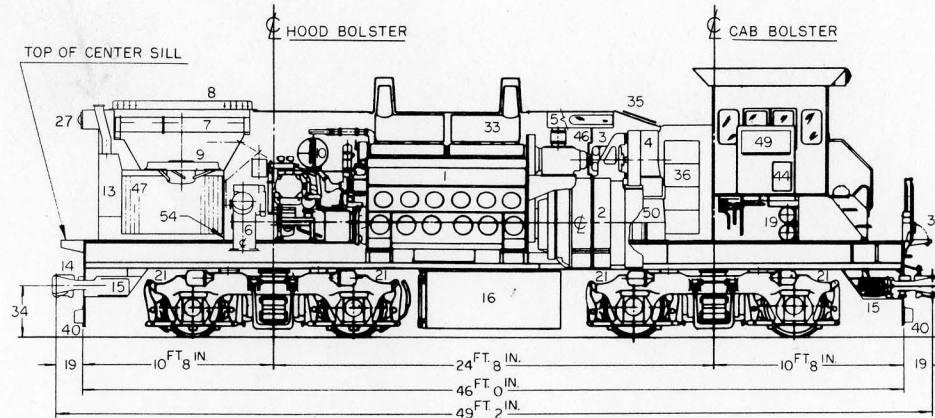
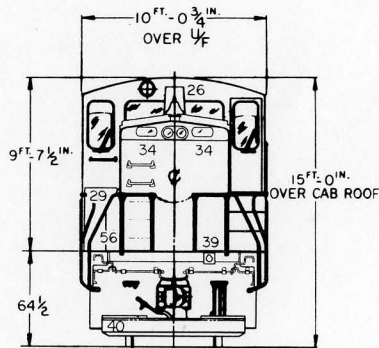
MODEL MP15AC-1500 HP MULTI-PURPOSE LOCOMOTIVE

LEGEND

1. ENGINE - 12-645E
 2. MAIN GENERATOR AR10-D14
 3. AUXILIARY GENERATOR
 4. TRACTION MOTOR - GENERATOR BLOWER
 5. ENGINE AIR FILTERS - AMER-KLEEN CARTRIDGE
 6. AIR COMPRESSOR - WBO
 7. RADIATORS
 8. COOLING AIR SHUTTERS
 9. COOLING FAN - 48 IN. DIAMETER
 10. ENGINE WATER TANK
 11. BATTERIES - MS 280
 12. SAND BOX - CAB END 15 CU. FT.
 13. SAND BOX - HOOD END 15 CU. FT.
 14. COUPLER - TYPE E
 15. DRAFT GEAR MS 485-6A
 16. FUEL TANK - 1600 GALLONS
 17. MAIN AIR RESERVOIRS
 18. ELECTRICAL CONTROL CABINET
 19. AIR BRAKE EQUIPMENT
 20. TRUCK - 2 AXLE - GP
 21. TRACTION MOTOR - D77
 22. SIDE FOOTBOARDS & LADDERS
 23. HANDBRAKE
 24. HOOD MOUNTED HANDRAILS
 25. HORN
 26. BELL
 27. HEADLIGHT
 28. ENGINEER'S CONTROL STAND
 29. ELEC. CABINET AIR FILTER
 30. EXHAUST STACK
 31. CAB SEAT
 32. LUBE OIL COOLER
 33. SPARK ARRESTER MANIFOLD
 34. NUMBER BOX
 35. ENGINE FILTER ACCESS DOORS
 36. CARBODY AIR FILTERS 13
 37. ELECTRICAL CONTROL PANEL
 38. M.U. END ARRANGEMENT
 39. M.U. RECEPTACLE
 40. PILOT
 41. LOAD REGULATOR
 42. SAND FILLER
 43. CLASSLIGHT
 44. ELECTRIC CAB HEAT
 45. ENGINE FILTER HATCH
 46. ENGINE ROOM PARTITION
 47. COOLING AIR INLET SCREEN
 48. HOPPER COMPARTMENT
 49. MODULES
 50. REMOVABLE BLOWER DUCT
 51. SUB-BASE VENT
 52. WATER COOLER
 53. COOLING FAN ACCESS DOOR
 54. COOLING SYSTEM PARTITION
 55. SIDE FOOTBOARDS & STEPS
 56. TRACTION MOTOR AIR DUCT HOOD EXTENSION
 57. FUEL TANK - 1100 GAL. (BASIC)
- *MODIFICATION



NOTE:
 LOCOMOTIVE HEIGHT TOLERANCE = ± 1/4 IN.
 LOCOMOTIVE WIDTH TOLERANCE = ± 1/4 IN.
 TRUCK LATERAL AT BOLSTERS = 1/2 IN.
 LOCOMOTIVE IS SHOWN INCLUDING HALF VARIABLE SUPPLIES AND IN NEW CONDITION STANDING STILL ON LEVEL AND TANGENT TRACK.



JULY 1975

Electro-Motive Division
 La Grange, Illinois



MODEL MP15AC - 1500 HP MULTI-PURPOSE LOCOMOTIVE

LEGEND

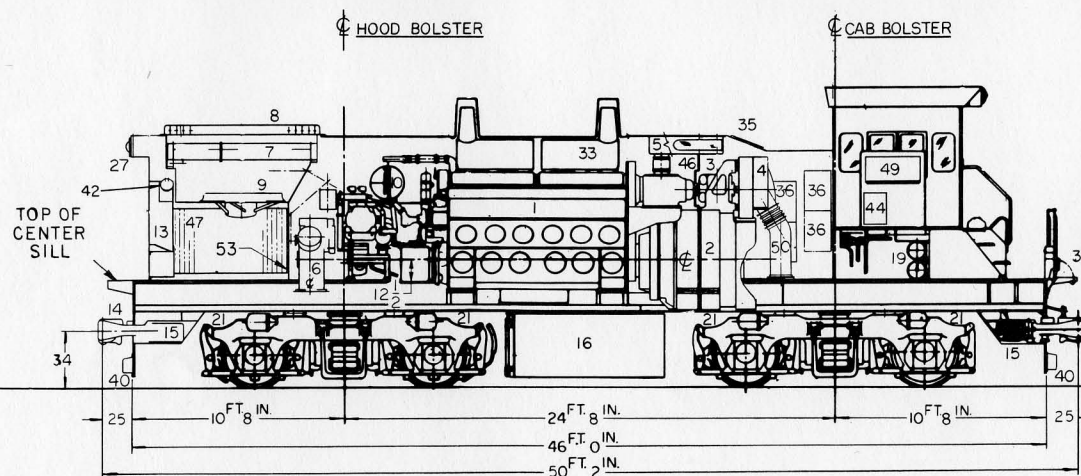
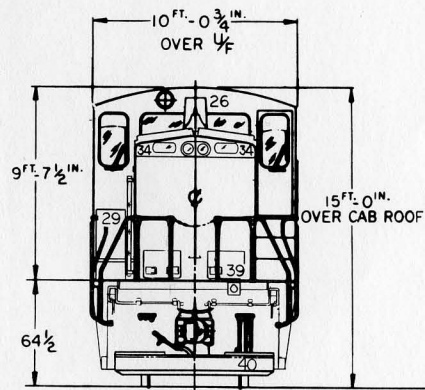
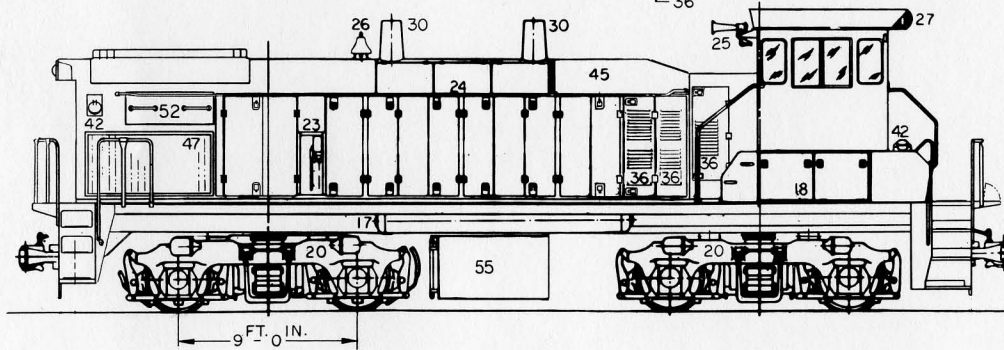
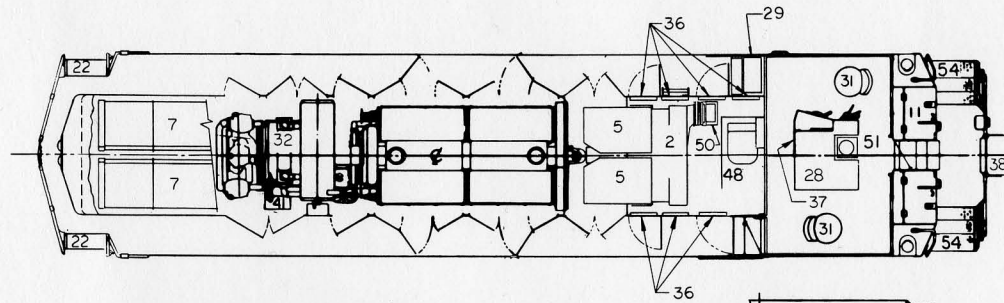
1. ENGINE - 12-645E
2. MAIN GENERATOR AR10-D14
3. AUXILIARY GENERATOR
4. TRACTION MOTOR - GENERATOR BLOWER
5. ENGINE AIR FILTERS - AMER-KLEEN CARTRIDGE
6. AIR COMPRESSOR - WBO (No provision for WBG)
7. RADIATORS
8. COOLING AIR SHUTTERS
9. COOLING FAN - 48 IN. DIAMETER
10. ENGINE WATER TANK
11. BATTERIES - MS 280
12. SAND BOX - CAB END 15 CU. FT.
13. SAND BOX - HOOD END 15 CU. FT.
14. COUPLER - TYPE E
15. DRAFT GEAR MS 485-6A
16. FUEL TANK - 1600 GALLONS
17. MAIN AIR RESERVOIRS
18. ELECTRICAL CONTROL CABINET
19. AIR BRAKE EQUIPMENT
20. TRUCK - 2 AXLE - GP
21. TRACTION MOTOR - D77
22. SIDE FOOTBOARDS & LADDERS
23. HANDBRAKE
24. HOOD MOUNTED HANDRAILS
25. HORN
26. BELL
27. HEADLIGHT
28. ENGINEER'S CONTROL STAND
29. ELEC. CABINET AIR FILTER
30. EXHAUST STACK
31. CAB SEAT
32. LUBE OIL COOLER

33. SPARK ARRESTER MANIFOLD
34. NUMBER BOX
35. ENGINE FILTER ACCESS DOORS
36. CARBODY AIR FILTERS 13
37. ELECTRICAL CONTROL PANEL
- *38. M.U. END ARRANGEMENT
- *39. M.U. RECEPTACLE
40. PILOT
41. LOAD REGULATOR
42. SAND FILLER
43. CLASSLIGHT
44. ELECTRIC CAB HEAT
45. ENGINE FILTER HATCH
46. ENGINE ROOM PARTITION
47. COOLING AIR INLET SCREEN
- *48. HOPPER COMPARTMENT
49. MODULES
50. REMOVABLE BLOWER DUCT
- *51. WATER COOLER
52. COOLING FAN ACCESS DOOR
53. COOLING SYSTEM PARTITION
54. SIDE FOOTBOARDS & STEPS
55. FUEL TANK - 1100 GAL. (BASIC)

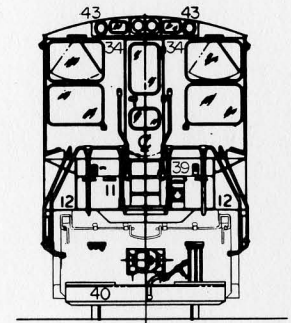
*MODIFICATION

NOTE:

LOCOMOTIVE HEIGHT TOLERANCE = $\pm 1/8$ IN.
 LOCOMOTIVE WIDTH TOLERANCE = $\pm 1/8$ IN.
 TRUCK LATERAL AT BOLSTERS = $1/2$ IN.
 LOCOMOTIVE IS SHOWN INCLUDING HALF VARIABLE SUPPLIES AND IN NEW CONDITION STANDING STILL ON LEVEL AND TANGENT TRACK.



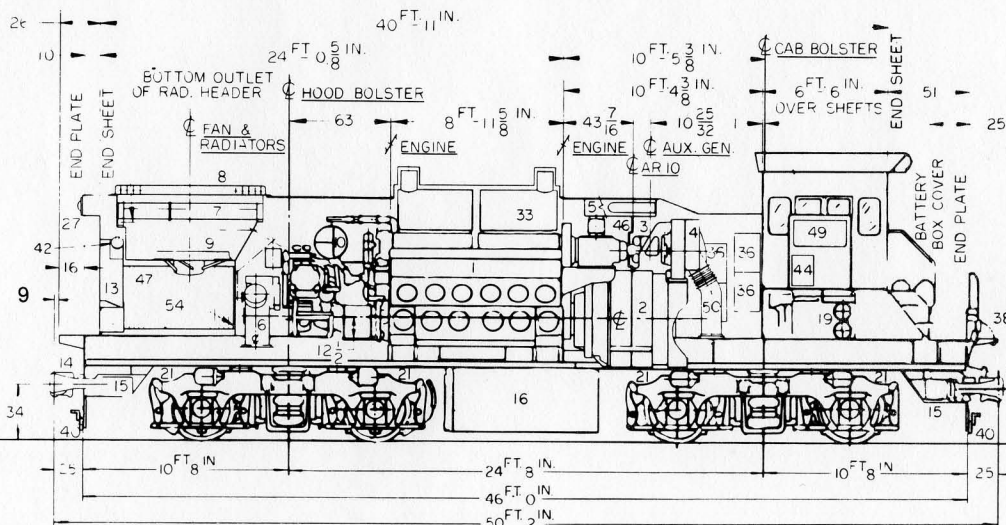
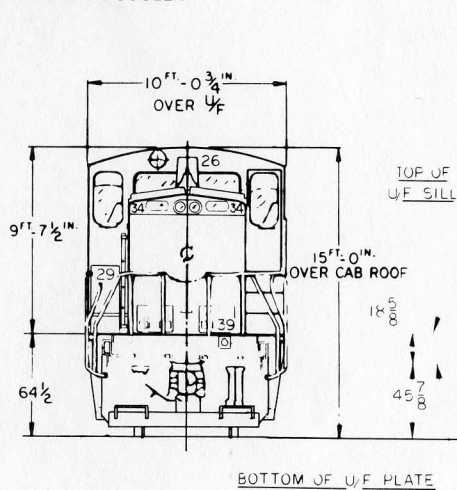
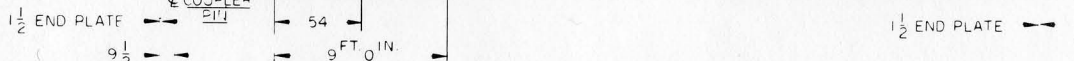
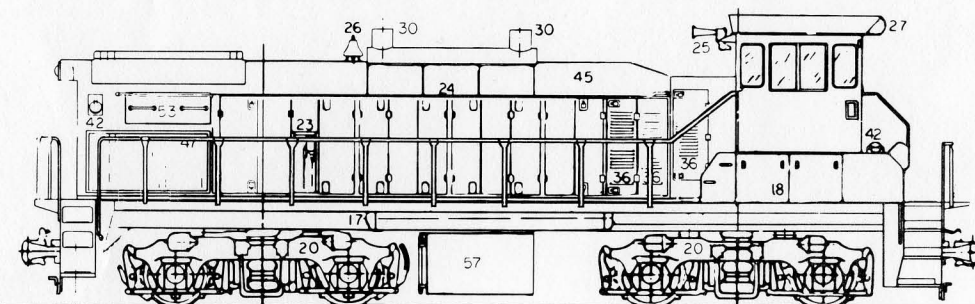
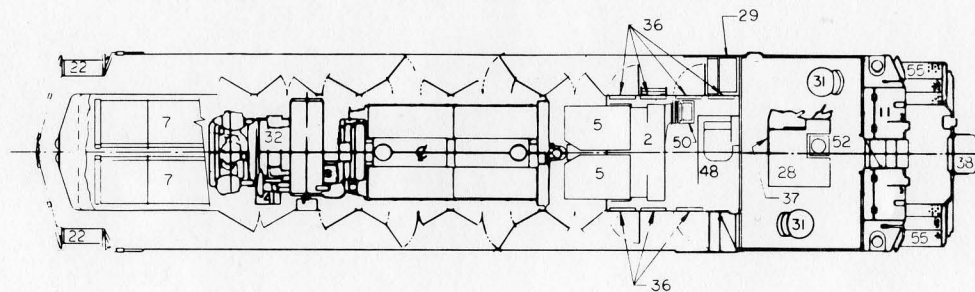
TOP OF RAIL



MODEL MP15AC — 1500 HP MULTI-PURPOSE LOCOMOTIVE

LEGEND

1. ENGINE - 12-645E
2. MAIN GENERATOR AR10-D18
3. AUXILIARY GENERATOR
4. TRACTION MOTOR - GENERATOR BLOWER
5. ENGINE AIR FILTERS - AMER-KLEEN CARTRIDGE
6. AIR COMPRESSOR - WBO (No Provision For WBG)
7. RADIATORS
8. COOLING AIR SHUTTERS
9. COOLING FAN - 48 IN. DIAMETER
10. ENGINE WATER TANK
11. BATTERIES - MS 280
12. SAND BOX - CAB END 15 CU. FT.
13. SAND BOX - HOOD END 15 CU. FT.
14. COUPLER - TYPE E
15. DRAFT GEAR MS 485-6A
16. FUEL TANK - 1600 GALLONS
17. MAIN AIR RESERVOIRS
18. ELECTRICAL CONTROL CABINET
19. AIR BRAKE EQUIPMENT
20. TRUCK - 2 AXLE - GP
21. TRACTION MOTOR - D77
22. SIDE FOOTBOARDS & LADDERS
23. HANDBRAKE
24. HOOD MOUNTED HANDRAILS
25. HORN
26. BELL
27. HEADLIGHT
28. ENGINEER'S CONTROL STAND (No Provision for Dual Control)
29. ELEC. CABINET AIR FILTER
30. EXHAUST STACK
31. CAB SEAT
32. LUBE OIL COOLER

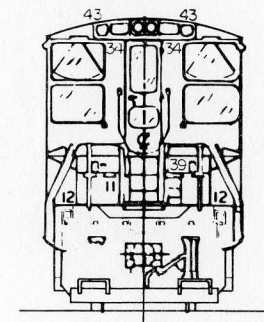


33. SPARK ARRESTER MANIFOLD
34. NUMBER BOX
36. CARBODY AIR FILTERS (13)
37. ELECTRICAL CONTROL PANEL
- *38. M.U. END ARRANGEMENT
- *39. M.U. RECEPTACLE
40. PILOT
41. LOAD REGULATOR
42. SAND FILLER
43. CLASSLIGHT
44. ELECTRIC CAB HEAT
45. ENGINE FILTER HATCH
46. ENGINE ROOM PARTITION
47. COOLING AIR INLET SCREEN
- *48. HOPPER COMPARTMENT
49. MODULES
50. REMOVABLE BLOWER DUCT
- *52. WATER COOLER
53. COOLING FAN ACCESS DOOR
54. COOLING SYSTEM PARTITION
55. SIDE FOOTBOARDS & STEPS
56. CAB VENTILATOR
57. FUEL TANK - 1100 GAL. (Basic)

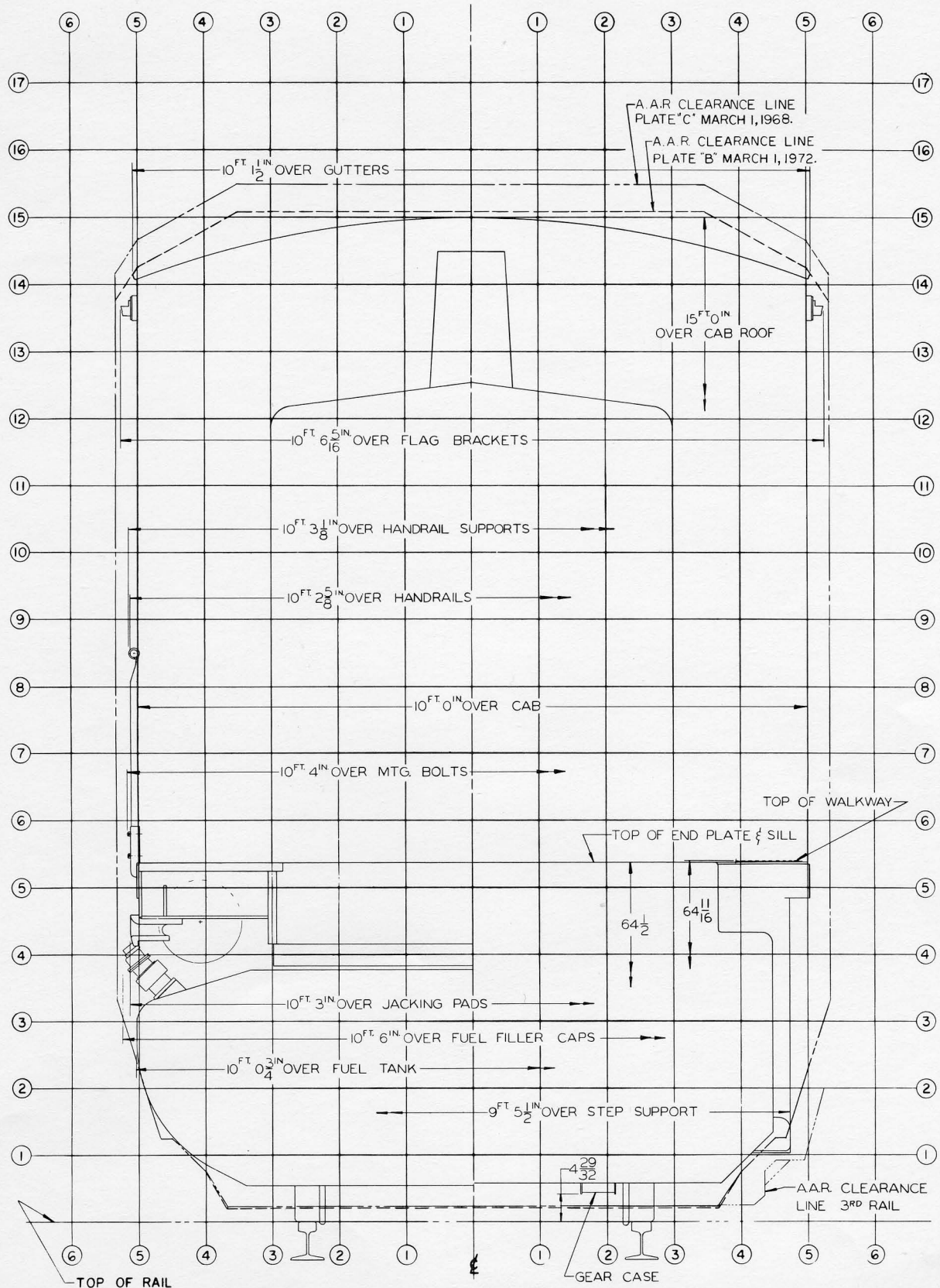
* MODIFICATION

NOTE:

- LOCOMOTIVE HEIGHT TOLERANCE = 1/2 IN.
- LOCOMOTIVE WIDTH TOLERANCE = ±1/2 IN.
- TRUCK LATERAL (BOL. + JRLS. with NEW TRUCKS) = 2 1/2 IN.
- LOCOMOTIVE IS SHOWN INCLUDING HALF VARIABLE SUPPLIES AND IN NEW CONDITION, STANDING STILL ON LEVEL AND TANGENT TRACK.



MP15AC CLEARANCE DIAGRAM



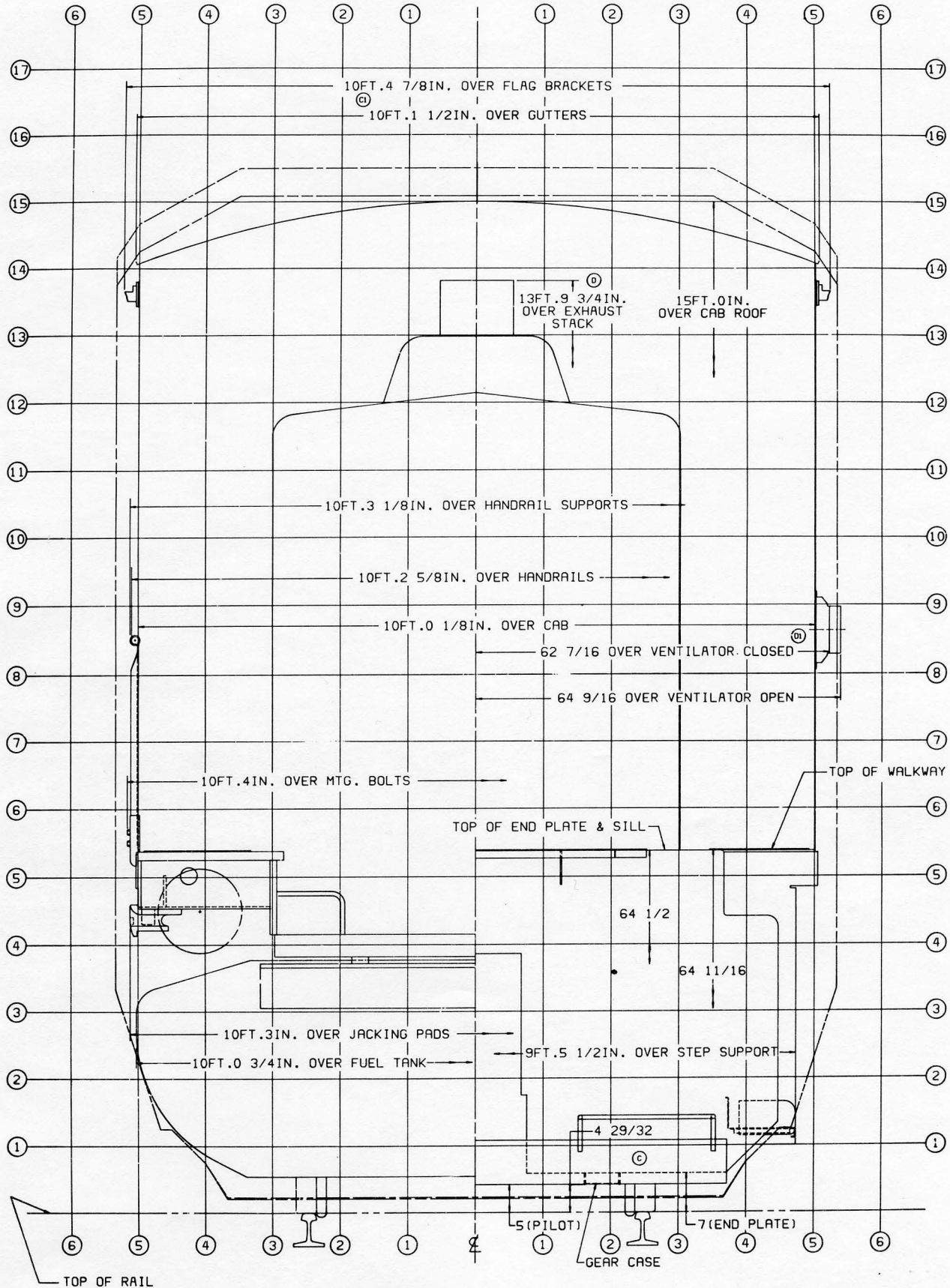
NOTE:

Loco. Height Tolerance = $\pm 1\frac{1}{2}$
 Loco. Width Tolerance = $\pm 1\frac{1}{2}$
 Max. Lateral
 (Bolster + Journals - New Trucks) = $2\frac{3}{4}$

Locomotive is shown including half variable supplies and in new condition, standing still on level and tangent track. Vertical dimensions will be $\frac{1}{2}$ in. less with full wheel wear. Vertical dimensions can also vary $\pm 1/8$ due to variable supplies.



MP15AC CLEARANCE DIAGRAM



NOTE:
 Locomotive Height Tolerance = $\pm 1\frac{1}{2}$ In.
 Locomotive Width Tolerance = $\pm \frac{1}{2}$ In.
 Lateral (Bol. + JrIs. w/new trucks) = $\pm 2\frac{3}{4}$ In.

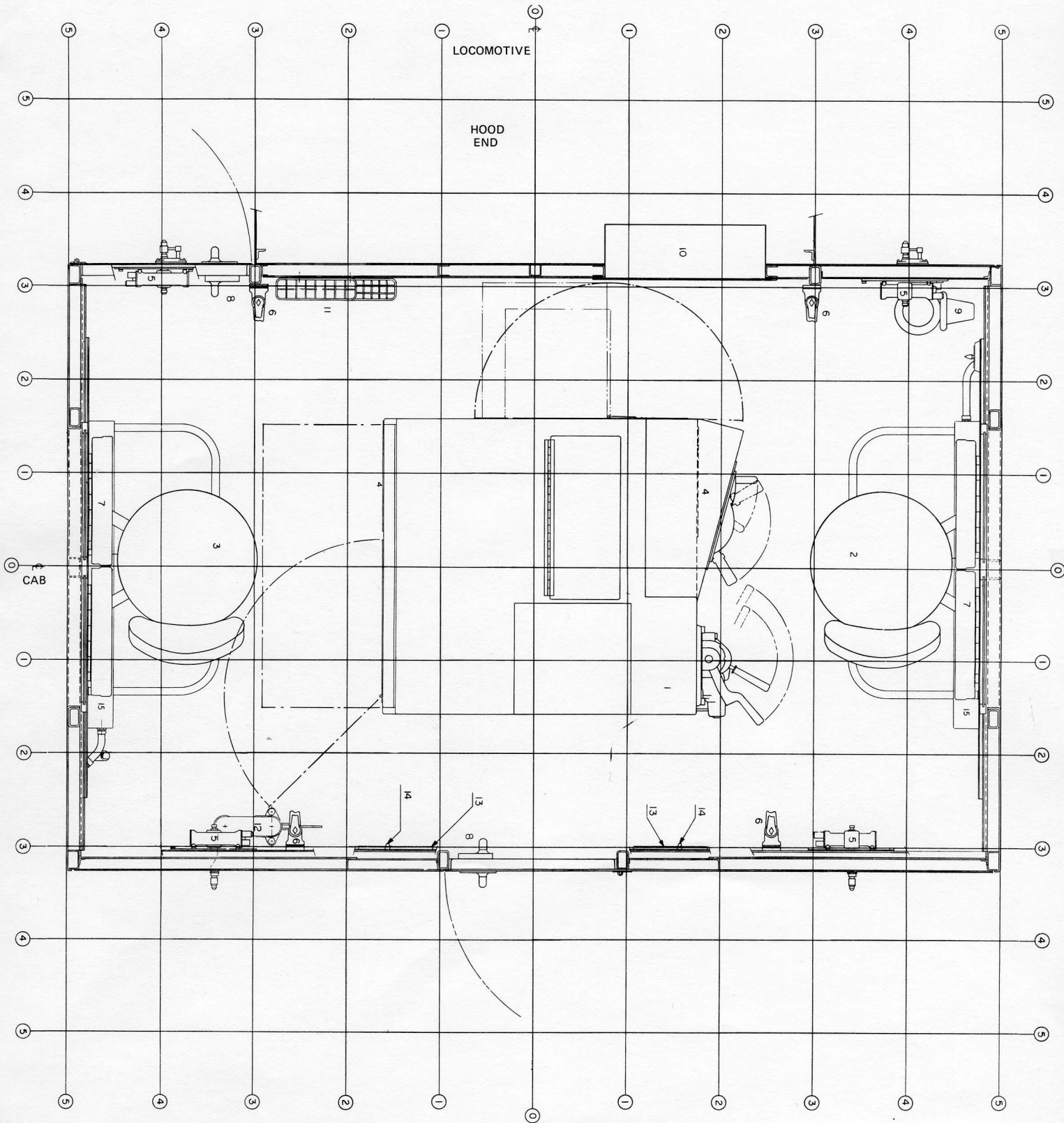
CLEARANCE OUTLINE:
 A.A.R. PLATE "B" DATED MARCH 1, 1972
 A.A.R. PLATE "C" DATED MARCH 1, 1968

Locomotive is shown including half variable supplies and in new condition, standing still on level and tangent track.

Vertical Dimensions will be $\frac{1}{2}$ in. less with full wheel wear.
 Vertical Dimensions can also vary $\pm \frac{1}{8}$ due to variable supplies.



BASIC MP15AC CAB ARRANGEMENT



- | | | | | |
|-------------------------------|---------------------|--|-----------------------------|------------------------------|
| 1. Engineer's Control Console | 4. Cab Heater (2) | 7. Folding Arm Rest (2) (Sliding) (Fold-Down Position) | 10. Engine Control Panel | 13. Card Holder (2) |
| 2. Engineer's Seat (Sliding) | 5. Window Wiper (4) | 8. Cab Door (2) | 11. Fusee Rack | 14. Coat Hook (2) |
| 3. Auxiliary Seat (Sliding) | 6. Sun Visor (4) | 9. Fire Extinguisher | 12. Conductor's Brake Valve | 15. Cab Auxiliary Heater (2) |